

AUCTION PARCELS E-1 AND E-2 OFFERED AS 2 PARCELS OR AS A WHOLE

Sells at 4:00 PM at Cusseta Plaza, 2487 Lee Rd 266, Cusseta, AL, at Exit 70 on I-85.

Total Acres: 425.089

Property: Property is being used now for timber and hunting. Good road system throughout the property, many game plots, numerous bold creeks, pine and hardwood timber. Power line going through part of the property and is being utilized as a large game plot. Property lies well with good drainage and has excellent location.

Only 8 miles to Opelika, (property is in Opelika city limits) and with location in Lee County, with county water available on 266, and less than a mile from I-85, and directly across the interstate from the Opelika Industrial Park, makes this an ideal future commercial or residential development property.

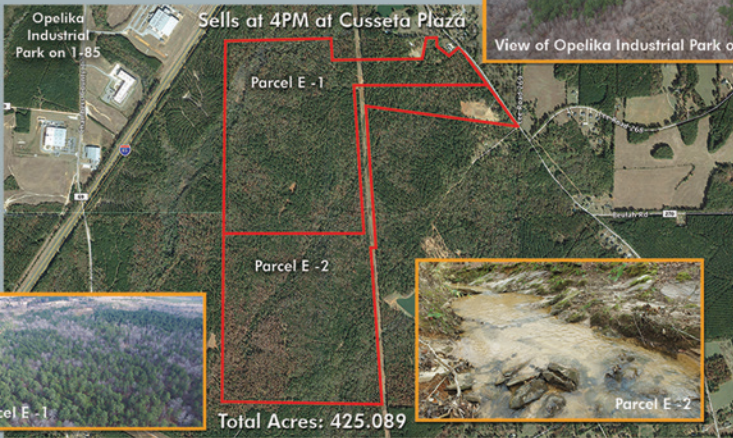
Hunting lease expires 7/1/2016.

GPS Address: Opelika, 2150 Lee Rd 266

Property is in Opelika city limits, Lee County, Alabama on Lee Co Road 266.

Directions: From I-85 Exit 70 (Cusseta) go 0.3 mile east, past truck stop to Lee County Road 266 turn right go 0.6 mile to property, on the right.

Mileage: Opelika 8, Auburn 18, Kia Automotive Plant 16, and Montgomery 70.



View of Opelika Industrial Park on I-85



Parcel E - 1



Parcel E - 2

Acres in each parcel will be available in catalog